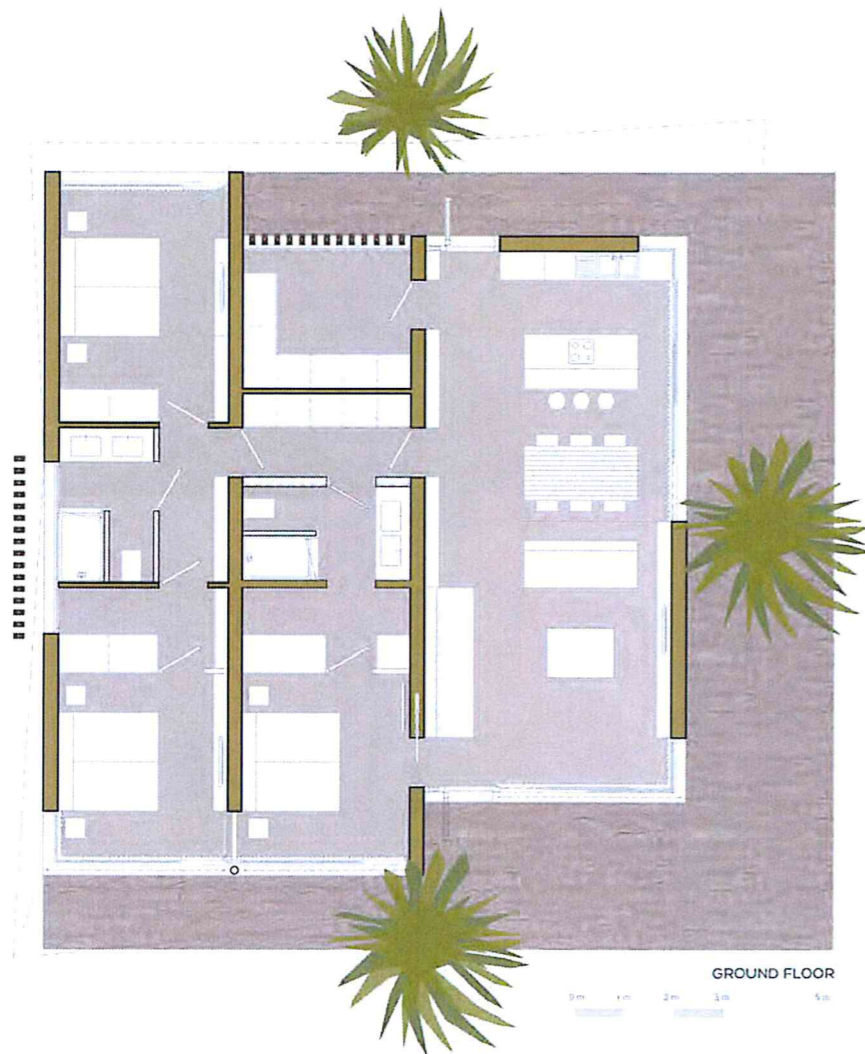


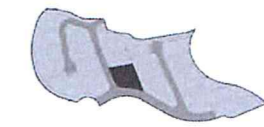
BASAMENT LEVEL



URBANIZATION



GROUND FLOOR



APT. 12_B5

PLOT SURFACE

669,76 m²

BUILT AREA

GROUND FLOOR	166,25 m ²
TERRACES (50%)	32,41 m ²
TOTAL	198,66 m²

B.L. - INSTALLATIONS ROOM	66,19 m ²
TOTAL	264,85 m²

USABLE AREA

01. KITCHEN / DINING ROOM	26,59 m ²
02. LIVING ROOM	27,11 m ²
03. BEDROOM 1	13,25 m ²
04. DRESSING ROOM	4,06 m ²
05. BATHROOM 1	6,51 m ²
06. CORRIDOR	4,73 m ²
07. BEDROOM 2	13,13 m ²
08. DRESSING ROOM	3,83 m ²
09. BATHROOM 2	5,88 m ²
10. CORRIDOR 2	4,73 m ²
11. BEDROOM 3	15,05 m ²

TOTAL	124,88 m²
--------------	-----------------------------