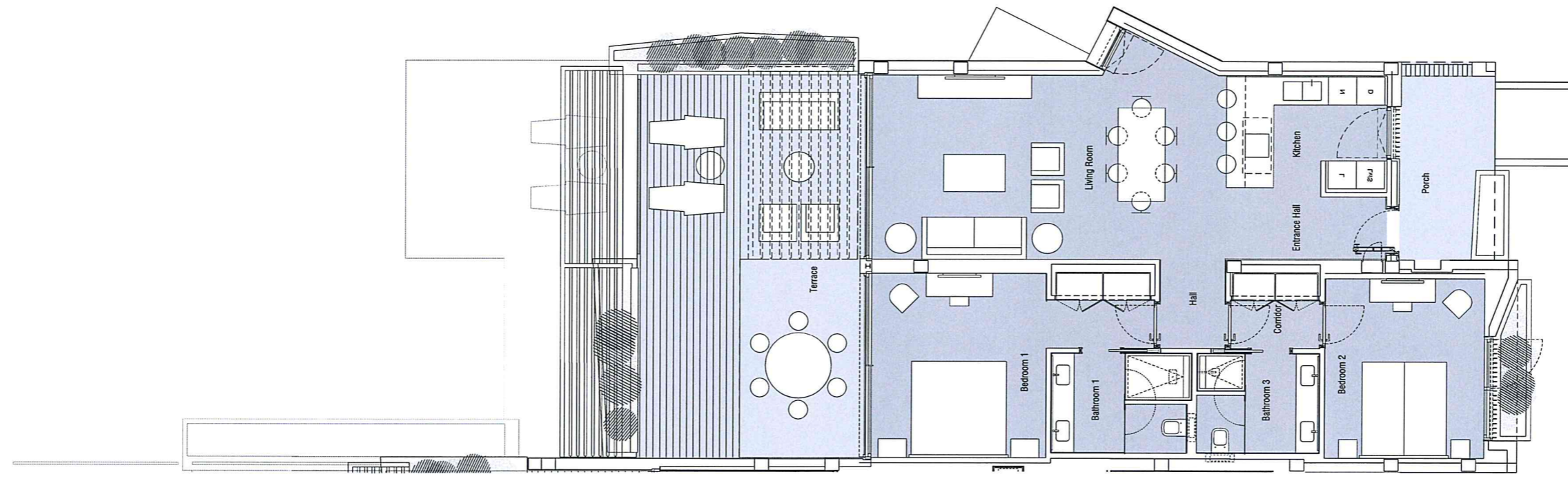
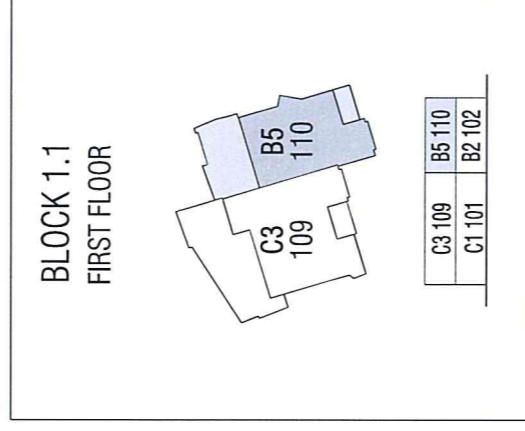
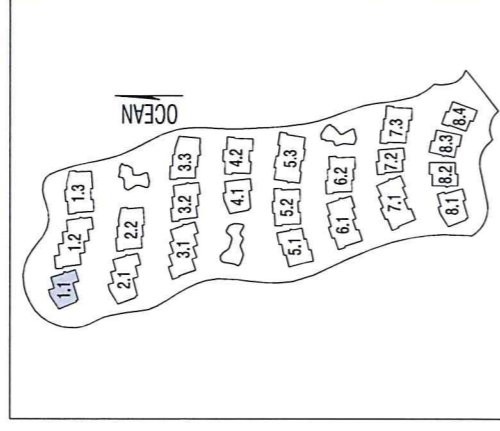


B5
APT. 110
first floor
2 BEDROOMS
BUILT AREA: 122,35 m²



INDOOR USABLE AREA: 92,70 m²

living room:	33,90 m ²
kitchen:	8,20 m ²
bedroom 1:	18,20 m ²
bedroom 2:	13,10 m ²
bathroom 1:	6,20 m ²
bathroom 2:	5,50 m ²
entrance hall:	1,90 m ²
corridor:	3,00 m ²
hall:	2,70 m ²

TERRACES: 36,30 m²

* Project and plans in draft phase and subject to change
 * Minipool optional (not included in price)

